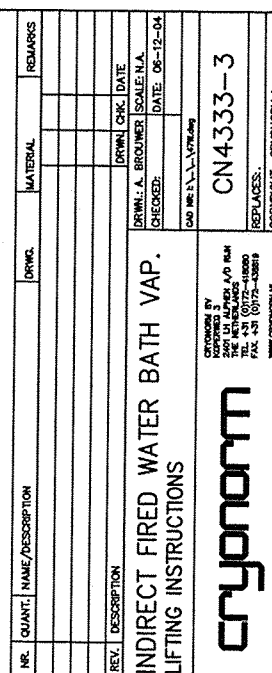


Technical drawing of a truck chassis showing dimensions and cable length. The drawing includes a side view of the chassis with a cable running along its length. The cable is labeled with a length of 5000. The chassis is labeled with a width of 966 and a height of 5970. A rear view of the chassis is also shown, labeled "REAR VIEW". The rear view shows the engine, transmission, and rear axle assembly. A dimension line indicates a "MIN. CABLE LENGTH 5000" for the rear view.



THEORETICAL CENTER OF GRAVITY